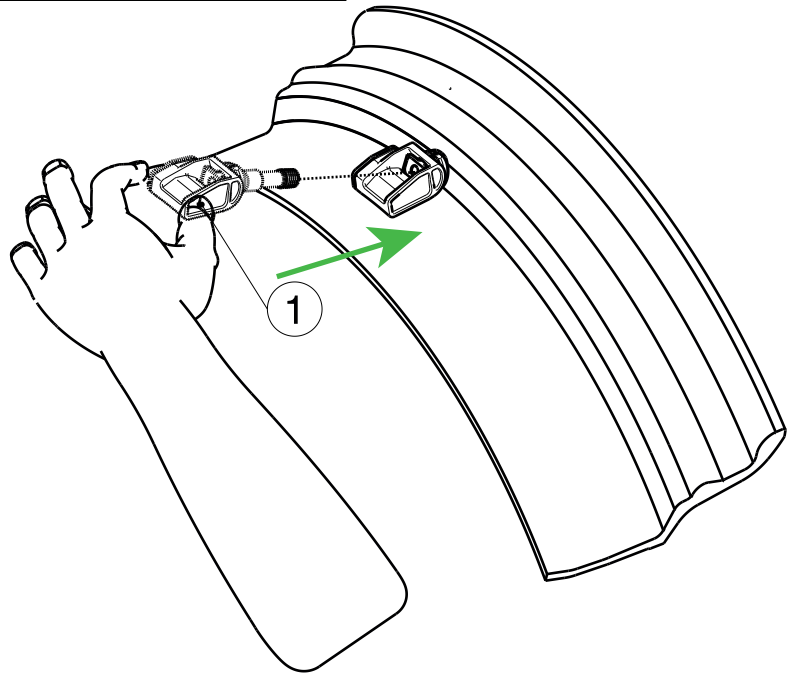



Variable Angle Sensors

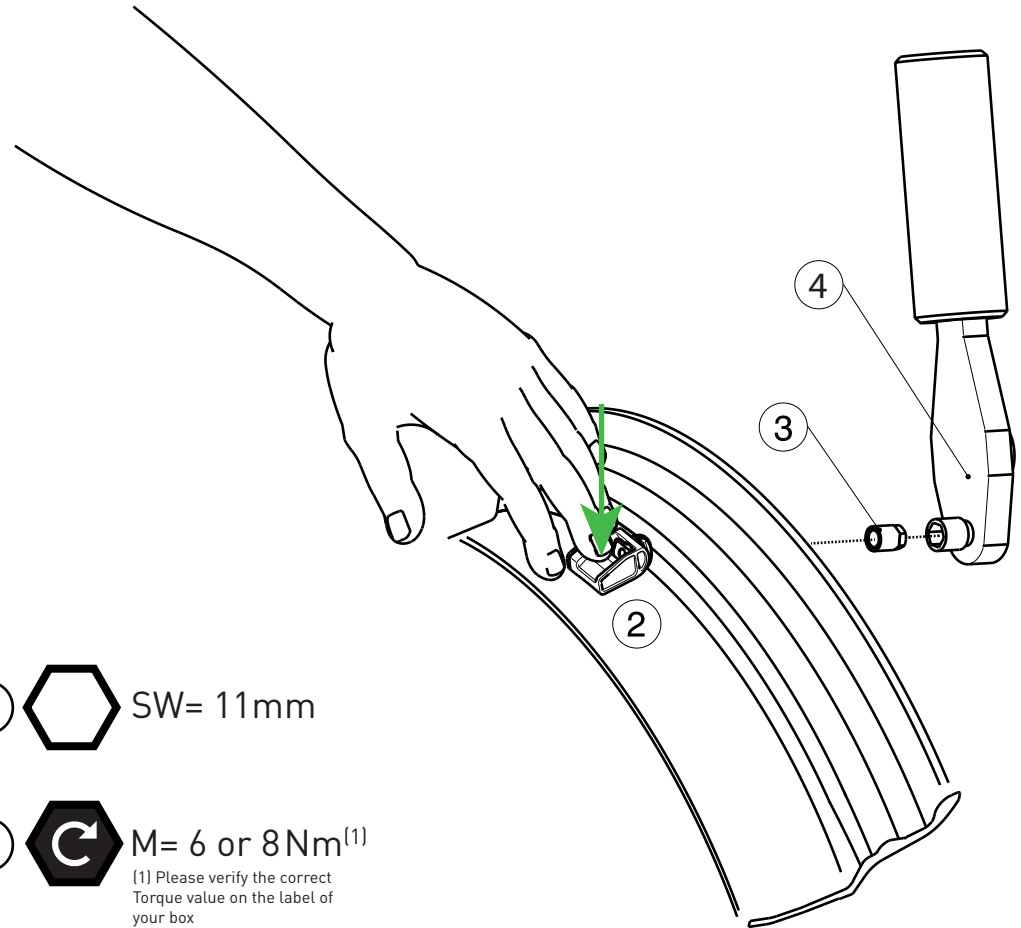
Quick Guide

Applicable to Gen Alpha, Gen Gamma and Gen Delta sensors only.  
Refs 2200, 3013, 3033, 3057, .... - More on [tpmseuroshop.com](http://tpmseuroshop.com)

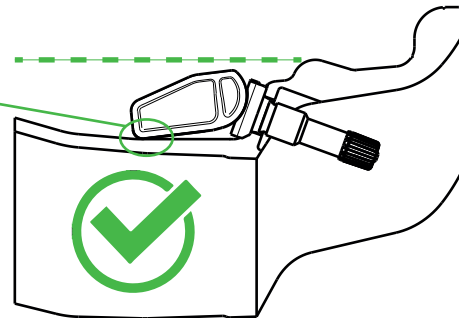


3  SW= 11mm

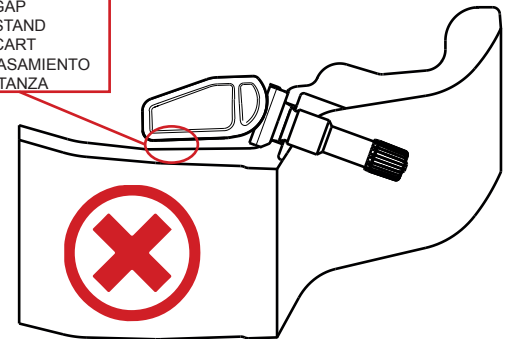
4  M= 6 or 8Nm<sup>(1)</sup>  
(1) Please verify the correct Torque value on the label of your box



CLASH  
KONTAKT  
CONTACT  
CONTACTO  
CONTATTO



GAP  
ABSTAND  
ÉCART  
GÜNBREBASAMIENTO  
DISTANZA



NOTE:  
Sensors images shown in this guide are for illustration purposes only!  
Physical sensor body may be different.

Non contractual document. For more technical information, please contact your supplier or our staff using the contact information listed on the left part of this document.

**EUROPE**  
AFTERMARKET (TPMS-SALES & SUPPORT)  
Hotline: 00800 5555 8767 (toll free)  
E-mail: [info@tpmseuroshop.com](mailto:info@tpmseuroshop.com)  
URL: [www.tpmseuroshop.com](http://www.tpmseuroshop.com)

**NORTH AMERICA**  
AFTERMARKET (TPMS-SALES & SUPPORT)  
Hotline: 1-800-288-1804  
E-mail: [info@tpmseuroshop.com](mailto:info@tpmseuroshop.com)  
URL: [www.schraderinternational.com](http://www.schraderinternational.com)